

NILFISK MC2C

Eliminate grime and
dirt with a blast!



NILFISK

More power to the pros!

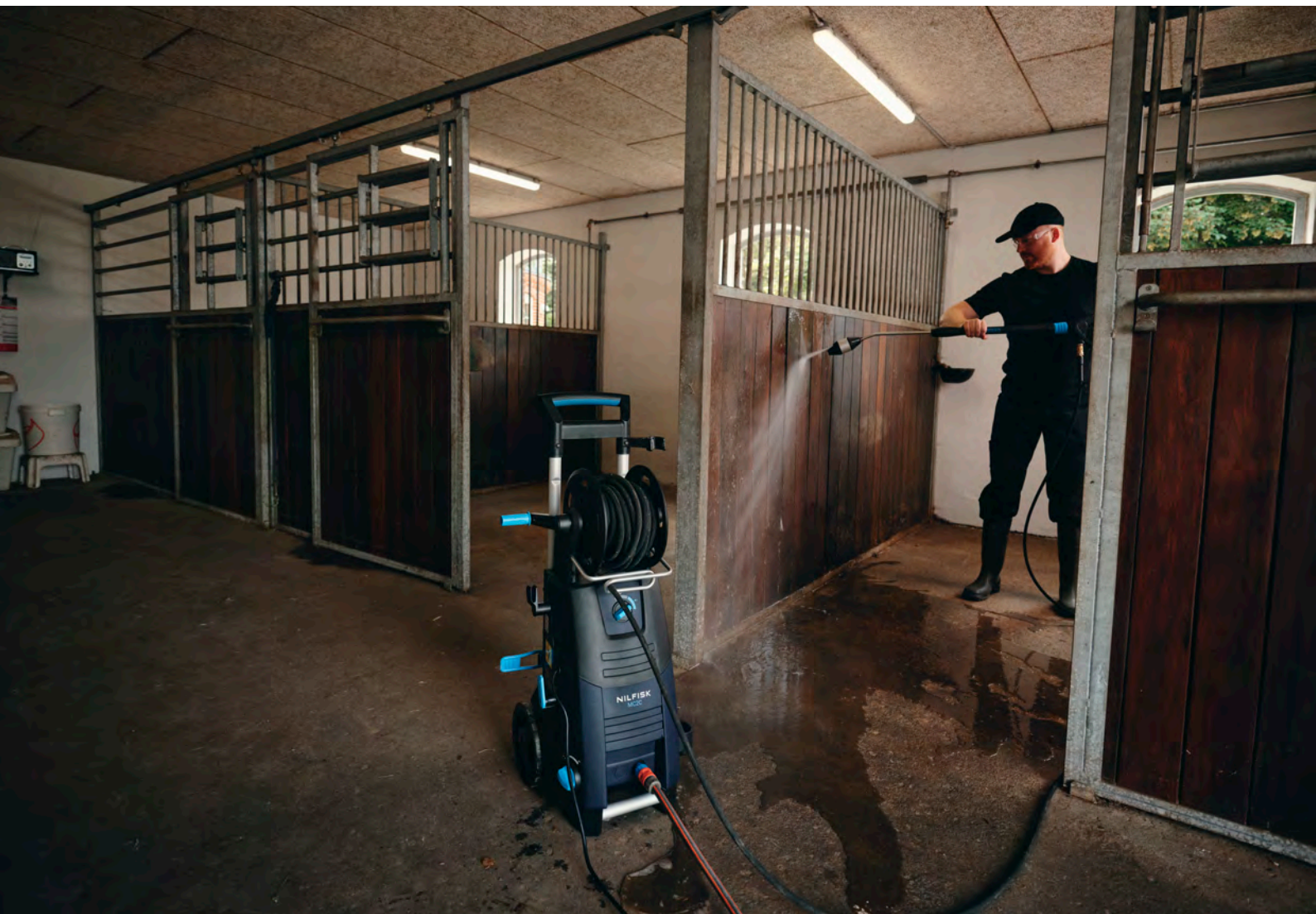
Make way for the new Nilfisk MC2C! A compact, powerful, and highly versatile cold water high-pressure washer for you to combat any daily cleaning tasks with ease, speed, and efficiency. The MC2C is tailored and targeted for all you professionals in agriculture, contract cleaning, building & construction, automotive and other trades.

The ergonomically designed spray gun allows this machine to work more efficiently with lower pressure while saving energy and reducing the risk of strain.

The unique 4-in-1 nozzle feature ensures a higher cleaning effect with less effort. Simply click the nozzle for the mode that fits the task and experience a superior experience.

The wear-resistant, steel-armed hose minimises tangles and is easy to reel in. Furthermore, the 15-metre hose increases working diameter.

A unique pressure activated system and proven pump technology enhance efficiency, reliability, and overall satisfaction.



- An ergonomically designed Ergo spray gun for improved user well-being and optimal, overall efficiency
- A unique 4-in-1 nozzle adapts to a variety of cleaning tasks - even in challenging or heavily soiled areas
- A unique pressure activated system enhances efficiency and minimises waste
- A 2.5 litre tank allows a greater range of cleaning without refilling
- A wear-resistant 15-metre steel-armed hose, angle free and easy to reel in
- A start/stop feature pauses the motor when the trigger is released



- A foam sprayer for simple, efficient and intuitive application of detergent



Fit for a fierce fight

The MC2C is your go-to tool for various cleaning jobs. Both working as a supplement to a more powerful high-pressure washer or as a standalone for small to medium cleaning tasks for:



Small hobby farms or animal farms

- Cleaning of agricultural equipment and vehicles
- Cleaning of tools and milking equipment



Small contract cleaners

- Light cleaning of car parks, forecourts
- Cleaning of outdoor areas
- Driveway and patio cleaning



Tradesmen, masons, and painters

- Small construction site cleaning
- Cleaning of tools and equipment
- Removal of mud, sand, and encrusted dirt where hot water isn't needed

Technical specifications

Description	Unit	MC 2C 120/520 XT
Part number		128471491
Pressure & flow (working pressure/max flow)	bar/psi	120/1740
Electrical		230/1/50/10
Recommended minimum fuse needed	A	10
Power consumption	kw	2.3
Pump & pistons		PRO & stainless steel
Motor	rpm	2800
Spray gun		Ergo 2000
Lance and nozzle		4-in-1 nozzle
Hose reel		yes
Hose length	m	15
Foam Sprayer		yes
Dimensions (lxwxh)	mm	394x391x955
Weight	kg	28.1